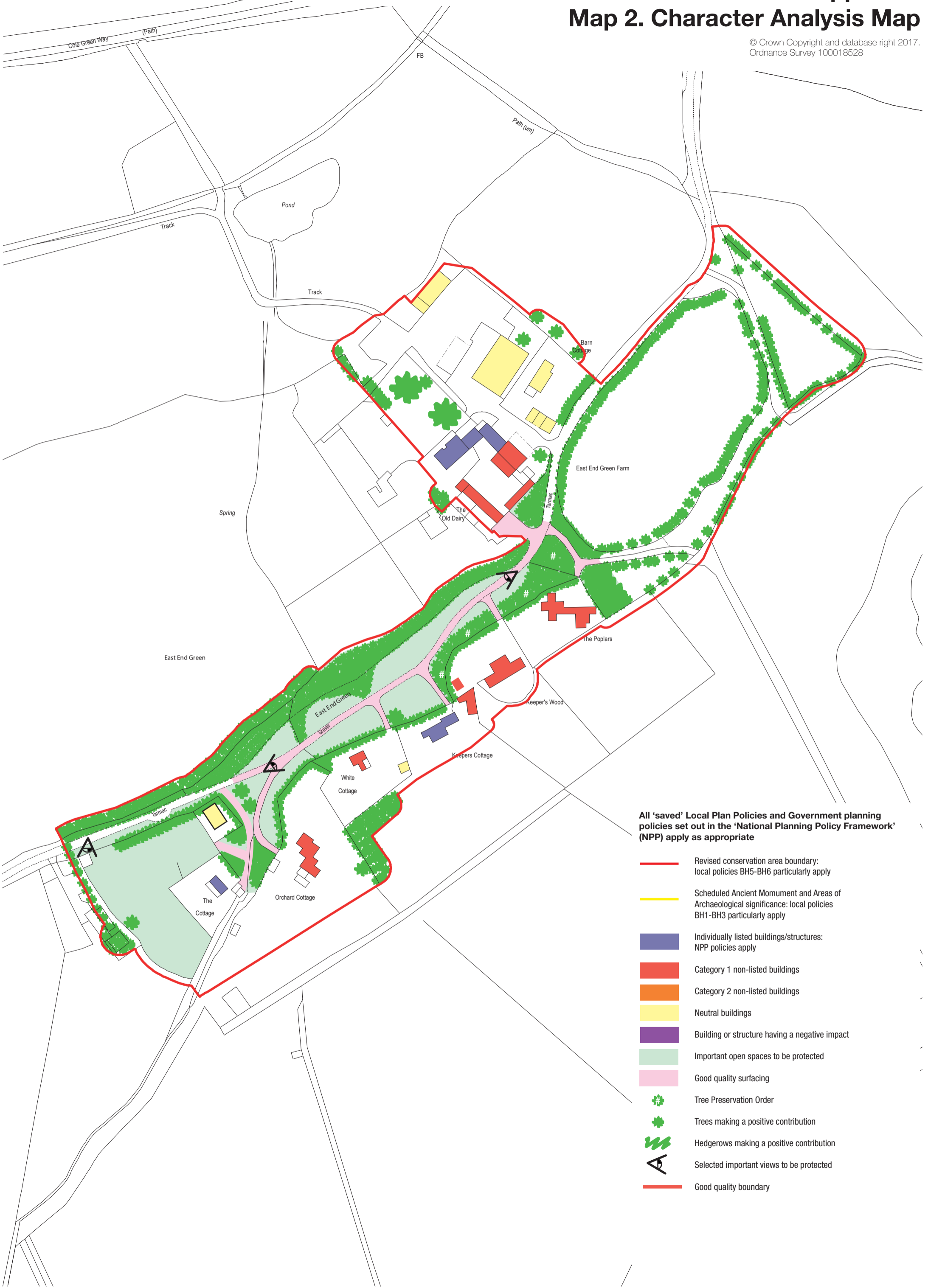


East End Green Conservation Area Character Appraisal

Map 2. Character Analysis Map

© Crown Copyright and database right 2017.
Ordnance Survey 100018528



All 'saved' Local Plan Policies and Government planning policies set out in the 'National Planning Policy Framework' (NPP) apply as appropriate

- Revised conservation area boundary: local policies BH5-BH6 particularly apply
- Scheduled Ancient Monument and Areas of Archaeological significance: local policies BH1-BH3 particularly apply
- Individually listed buildings/structures: NPP policies apply
- Category 1 non-listed buildings
- Category 2 non-listed buildings
- Neutral buildings
- Building or structure having a negative impact
- Important open spaces to be protected
- Good quality surfacing
- ✕ Tree Preservation Order
- ★ Trees making a positive contribution
- ~ Hedgerows making a positive contribution
- ▲ Selected important views to be protected
- Good quality boundary